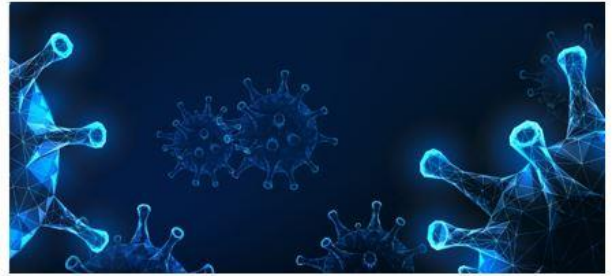


HR Communications Regarding Coronavirus (COVID-19)



As we continue to navigate through these uncertain and challenging times, we are committed to continuing to provide employees with timely information and helpful resources.

TALENT ACQUISITION UPDATE

Given our evolving staffing needs, we are presently not accepting any new transfer requests and will be temporarily disabling our internal career site as of Monday, March 23. Employees should not apply for internal positions on our external careers site either. It is important to keep employees in their current roles while we navigate the current situation, as internal movement makes scheduling very challenging. In addition, keeping experienced staff in their current roles allows us to better assist the community during these challenging times.

CHILD-CARE NEEDS ASSESSMENT

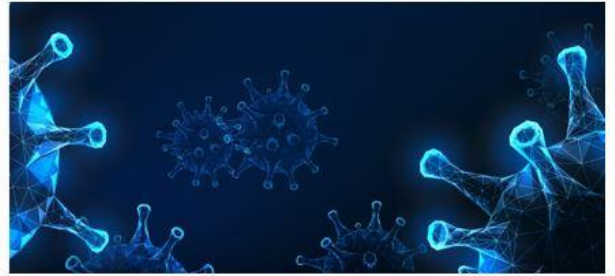
We are currently assessing the child-care needs of our employees to develop a plan to help fill needs through community partnerships, resources and our ELCs. If you are experiencing challenges finding care for your children (ages 1-12), please [CLICK HERE](#) to complete an online survey by **Tuesday, March 24**, so that we can evaluate the collective childcare needs of our employees.

SOCIAL DISTANCING

The CDC has recommended the practice of social distancing to help curb the spread of the Coronavirus (COVID-19). This means maintaining a distance of at least 6 feet between you and other individuals to reduce the chance of contracting or spreading the virus. Baptist Health recognizes the challenges of working together and caring for patients, while following these recommendations. Our current “No Visitor” policy strives to enable our clinical employees to follow social distancing guidelines when not directly caring for patients. Here are some tips to help both clinical and non-clinical employees practice social distancing as you continue to perform your job duties:

- When rounding on patient floors, be sure to limit the number of caregivers in a patient room at one time and follow appropriate hand hygiene and personal protective equipment protocols.
- Refrain from congregating in the hallways, dining rooms, staff lounges, offices or at nurses’ stations.
- For team huddles, use Zoom instead of in-person meetings, when possible. [CLICK HERE](#) for etiquette tips when using Zoom.

HR Communications Regarding Coronavirus (COVID-19)



- If you must have an in-person meeting, limit the number of participants in the room to fewer than 10 individuals and position seats at least 6 feet apart, when possible.
- Wash hands or use hand sanitizer upon entering the room and immediately after leaving the room.
- Cover sneezes with a tissue and immediately throw it away and wash or sanitize your hands.
- Cough into your elbow.

If you have any concerns or questions about these practices, please speak to your leader.

AS A REMINDER...

You can get the **latest employee information** regarding Coronavirus (COVID-19) from ***Baptist Health on the go!*** – a mobile site that can be accessed from anywhere at any time. Just type baptisthealth.net/go on your phone, computer, or tablet. [CLICK HERE](#) for more information. *Boca Regional employees should type boca.baptisthealth.net and can [click here](#) for more information.*